

# LAKE GENEVA CENTRE

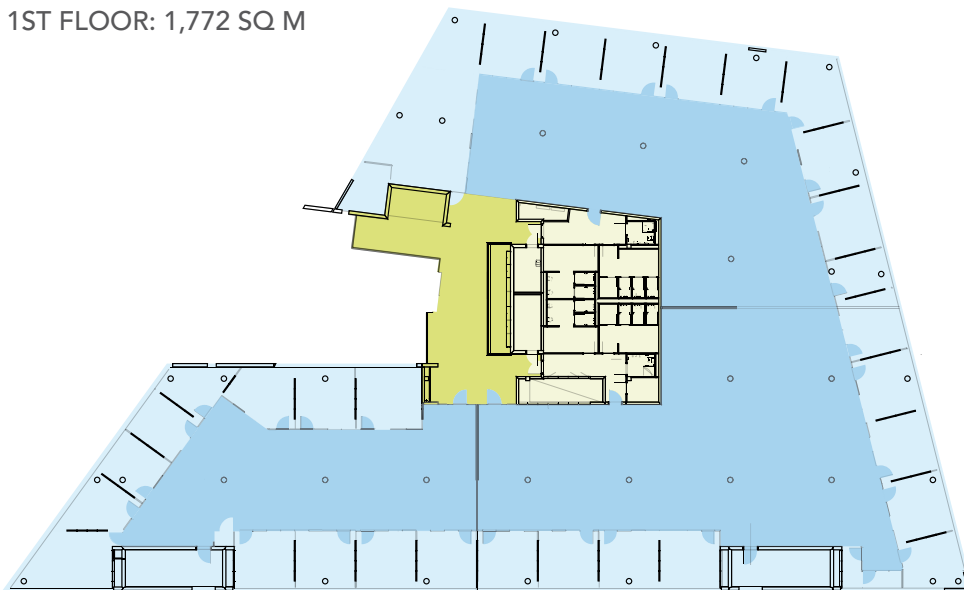
Morges | Switzerland

A unique and beautiful setting with great connections.

4,177 SQ M DIVIDED INTO TWO AREAS OF 1,199 SQ M AND 2,978 SQ M. WITH OVER 100 PARKING SPACES



## 1ST FLOOR: 1,772 SQ M



### Features

- Indoor parking (1 area of 40 sq m)
- Catering area with a sumptuous terrace
- Raised access flooring with integrated floor boxes
- Air cooling
- Partitioning with acoustic lining
- Modern fittings
- High- and low-voltage wiring (Cat 7)
- 3 coffee corners per floor
- Unbeatable view over the lake and the Alps



**CBRE**  
CB RICHARD ELLIS  
PI PERFORMANCE

**CB Richard Ellis**  
33, rue des Bains, CH-1205 Geneva  
+41 (0)22 322 80 60 [www.cbre.ch](http://www.cbre.ch)

**Please contact:**  
**Stéphane Conte**  
+41(0)22 322 80 53 [conte@cbre.ch](mailto:conte@cbre.ch)